

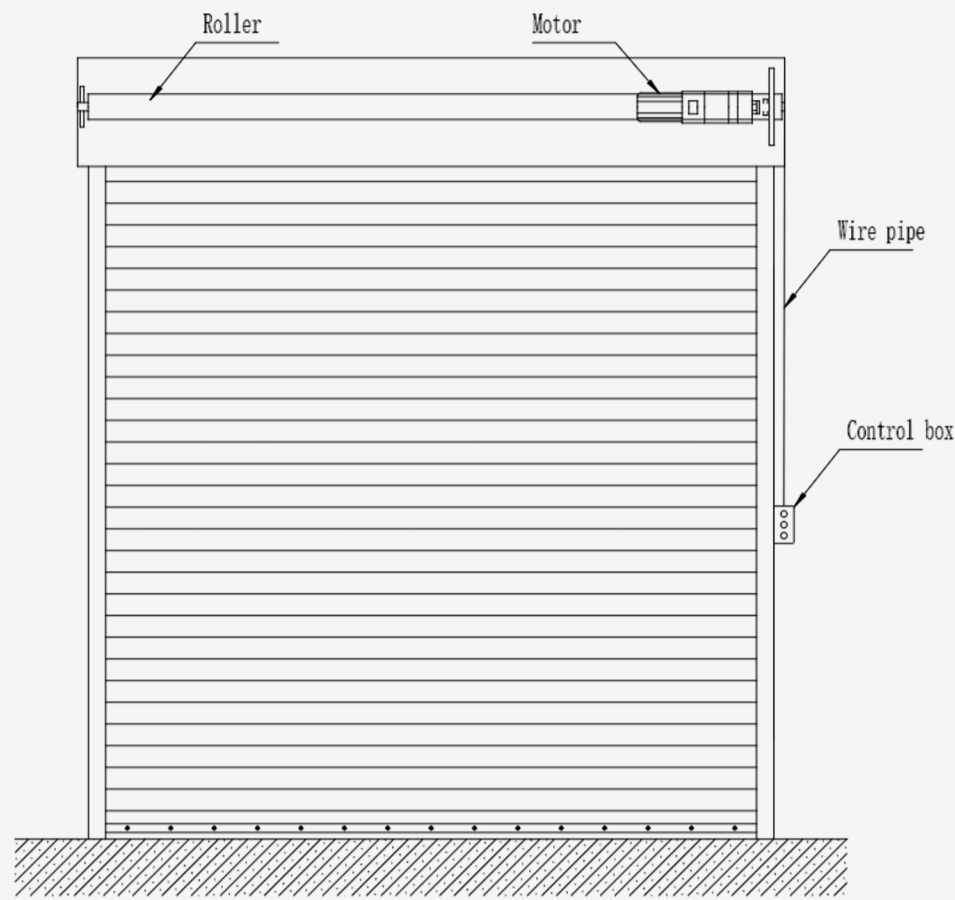


## Stainless Steel Transparent Roller Shutter Door

CAD Drawing ✓ Demand Customization ✓ Large Quantity Discount ✓



### STRUCTURE DIAGRAM



### MOTOR



■ Chinese top brand motor

■ Can be opened manually when power failure

We use exclusive motors for rolling doors, which can be used to open the door manually during a power outage, providing double protection.



### BUTTON AND REMOTE

Dual control with button and remote, easy to operate.  
Easy to operate and adapt to different usage scenarios.  
Easy to control both near and far.



Wireless Wall Switch  
Beautiful and easy to install



### SAFETY DEVICE



Closure Detector



Photocell Sensor

Closure detector and photocell sensor serve as safety devices that can detect pedestrians passing by in time, providing safety guarantee for people when entering and exiting.



### SLATS

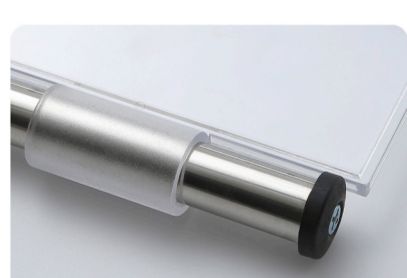
■ Slat thickness: 1.5mm

■ Slat material: Polycarbonate(PC)

Excellent impact resistance, weather resistance and light transmission.  
The curtains are strong, transparent and resistant to deformation, providing a clear view of the interior space while safeguarding safety and security needs.



### WINDBREAK



Material: Stainless steel

Increases door strength and wind resistance.  
Ensures stable operation in harsh weather and extends service life.

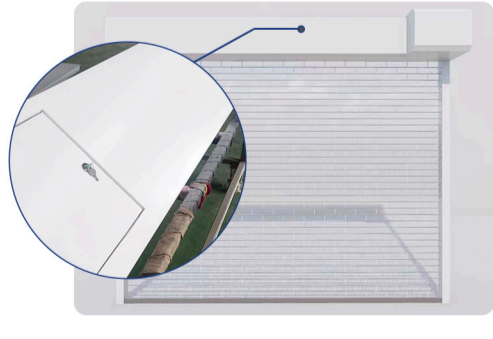


### RAILS WITH SEAL

The track can be equipped with optional sealing rubber strips to effectively enhance the airtightness and sound insulation performance of the door body, which is suitable for places with high requirements for environmental control.



### HOOD COVER BOX



Hood cover box made of 1mm powder-coated galvanized steel. Corrosion-resistant and visually refined.  
Protects internal components, extends service life, and enhances the door's overall appearance.

## CUSTOMIZED SERVICE

Rails and hood cover boxes can be customized with colors

✓ Ral Code Color

✓ LOGO

