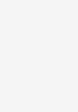


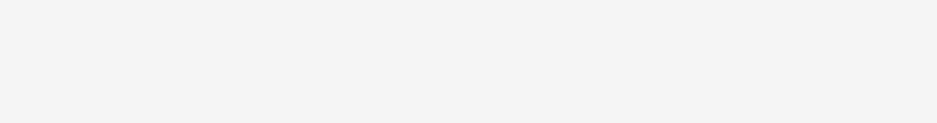
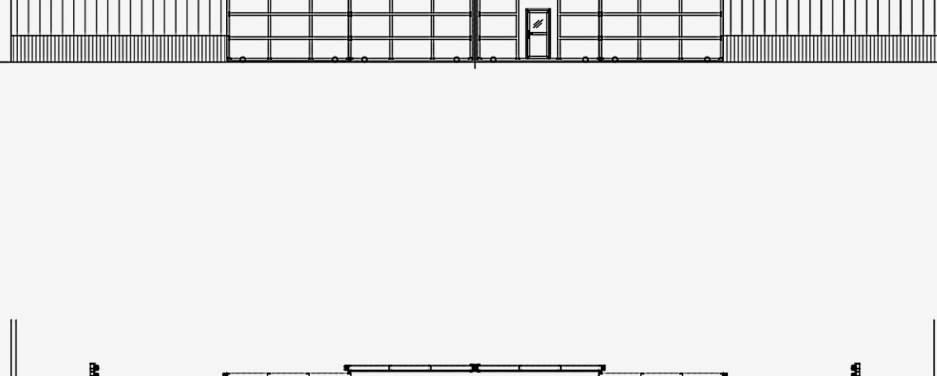


Sliding Hangar Door

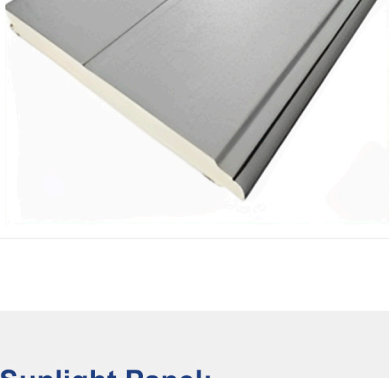
CAD Drawing ✓ Demand Customization ✓ Large Quantity Discount ✓



STRUCTURE DIAGRAM



PANEL



PU Sandwich Panel:

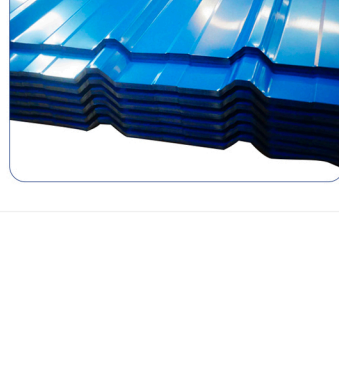
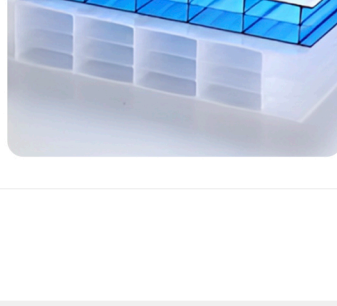
The core layer is made of **polyurethane foam** with a density of $48\pm 2 \text{ kg/m}^3$, which provides excellent thermal insulation, heat insulation and wind resistance.

The overall structure of the door panel is solid, and the surface material is **double-layer 0.4mm galvanized steel plate**, corrosion-resistant, suitable for large buildings under various climatic conditions.

PC Sunlight Panel:

The PC panel is lightweight yet strong, offers high light transmission, excellent weather resistance, and UV protection.

This reduces the overall door weight and motor load, while enhancing indoor daylighting, energy efficiency, and visual comfort.



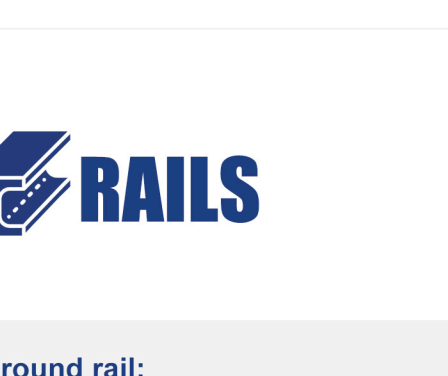
Corrugated Color-coated Steel Panel:

These panels offer high structural strength and corrosion resistance, while the corrugated design enhances rigidity for large-span applications.

This ensures long-term durability, reduced maintenance, and a clean, professional appearance—ideal for demanding industrial environments.



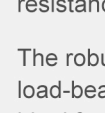
STEEL STRUCTURE



The door body is composed of multi-layer structure consisting of door panel - steel structure - color steel panel, which has a solid structure and effectively guarantees the stability and safe operation of the super large door body.

All material are hot galvanized, with excellent corrosion resistance.

All joints are fully welded or bolted with high strength.

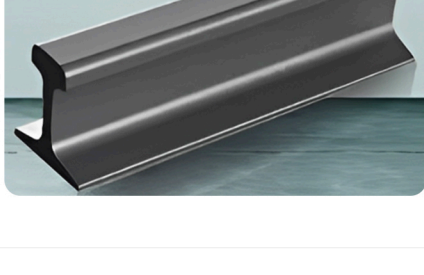
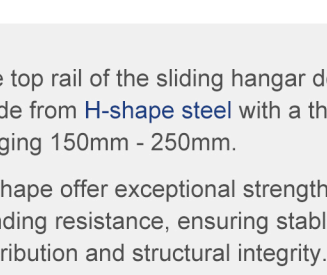


RAILS

Ground rail:

The sliding hangar door features a high-strength steel ground rail, precisely machined and treated for corrosion resistance.

The robust structure provides excellent load-bearing capacity and smooth operation, ideal for heavy-duty doors with frequent use.



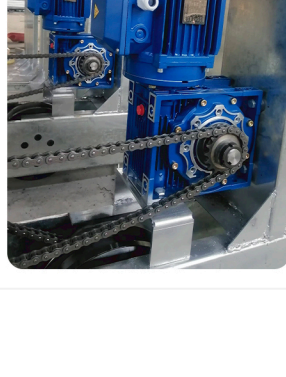
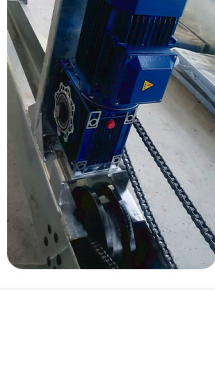
The top rail of the sliding hangar door is made from **H-shape steel** with a thickness ranging 150mm - 250mm.

H-shape offer exceptional strength and bending resistance, ensuring stable load distribution and structural integrity.

This improves the durability and safety of the entire system.



MOTOR



Equipped with special high-power motors, designed for heavy-duty large-span doors.

It delivers strong, stable performance with built-in overheating protection and versatile control interfaces to suit various operational conditions.

The power and number of motors are determined by the size of the door and the number of door panels.

COLOR CUSTOMIZED



Ral Code Color

Recommended Colors:

White/Grey/Black



PEDESTRIAN DOOR

Pedestrian doors are available as an option to facilitate the passage of people on a daily basis.

For larger hangar doors, the addition of pedestrian doors can significantly improve the efficiency of passage and avoid the inconvenience of frequently opening the entire door.



WINDOW



The optional **window** design not only effectively introduces natural light to enhance the brightness of the interior, but also facilitates the observation of the interior by external personnel, enhancing the sense of transparency and visibility of the space.

Project Cases



Hangar in Zhengzhou, China



Hangar in Xinjiang, China