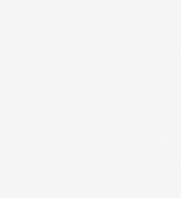


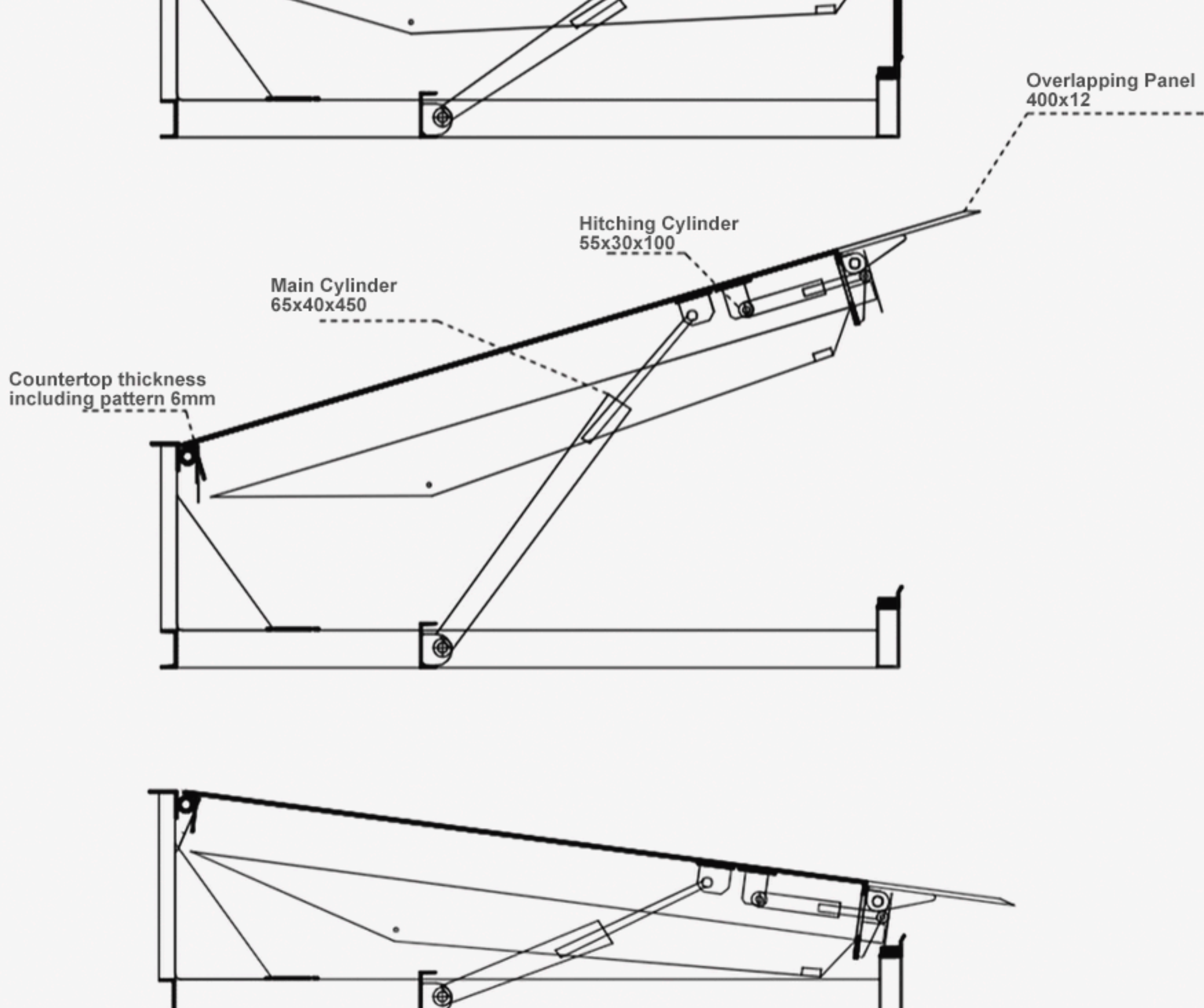


Dock Leveler

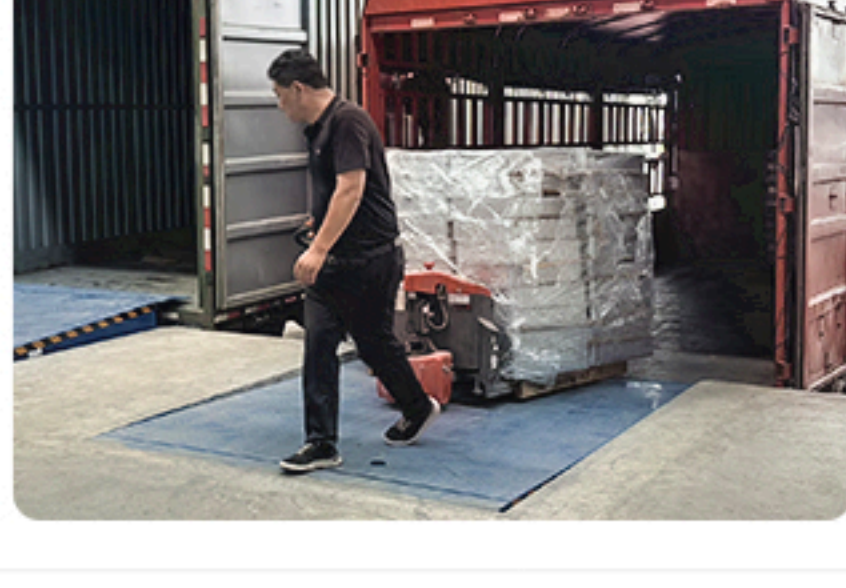
CAD Drawing ✓ Demand Customization ✓ Large Quantity Discount ✓



STRUCTURE DIAGRAM



LOAD CAPACITY

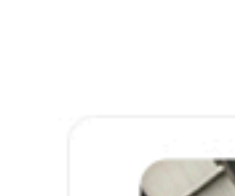


The overall assembly can bear 120% load of standard nominal load capacity. Under static pressure of 24 hours, the deformation is within 3mm. And after pressure released, the deformation will recover.

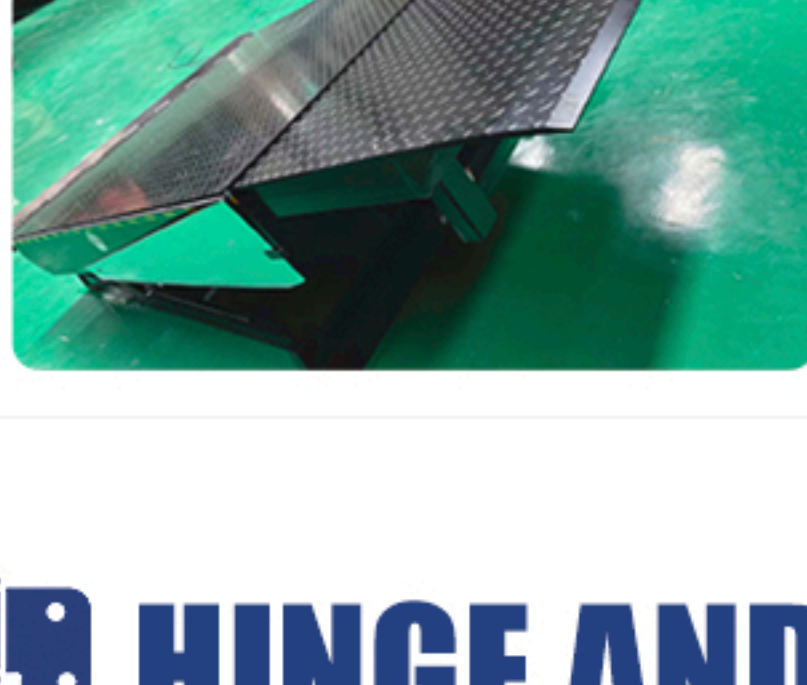


INTERNAL STRUCTURE

The high-strength "U" -shaped beam design ensures high load and long-term operation without deformation.



PLATFORM GROUND



Platform ground is made from high-strength 8mm or above thick steel plate. Surface is processed with groove milling to make it anti-skid. Surface treatment: Coated with epoxy resin paint, very durable and high anti-corrosive.



HINGE AND SHAFT

Hinge and shaft are super high temperature heat treated to reduce its deformation.



HYDRAULIC DRIVE STATION



Whole set of hydraulic drive station is imported from Europe, with stable power output. It can work under high frequency because of very low work temperature of oil. High standard seal avoids oil leaking.



ANTI-ROLLING SKIRTS

Anti-rolling skirts are provided on both sides to prevent accidental injury from reaching the platform.



SUPPORT ROD



There is a support rod that ensures that maintenance personnel enter the docking bridge for maintenance.



ALL TYPES



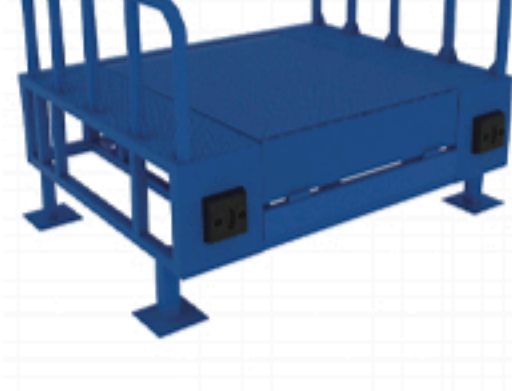
Flap-type



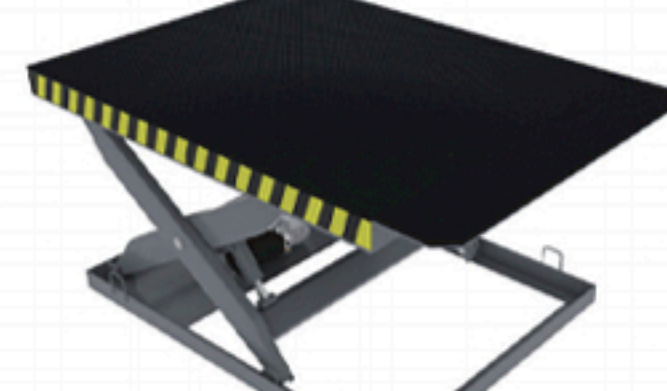
Telescopic



Edge-type



Frame-type



Scissor-type



Vertical



PRODUCTS REAL SHOT

